

APPLICATION FOR SPECIAL EXCEPTION

Surface Mining

Applicant Delbert Goodloe	Street Address of Property (if different address): Hwy 51 North of Pisgah Bottom Road
-------------------------------------	---

APPLICATION DATE	Present Zoning of Property	Legal Description of Property:	TAX PARCEL NUMBER	FLOOD ZONE	MAP/PLAT OF PROPERTY
11-1-2020	A-1	See (Exhibit A)	1034-28-001/00.00		See (Exhibit B)

Other Comments: As per Section 805 of the Madison County Zoning Ordinance.

Respectfully Submitted

Delbert Goodloe

.....

Petition submitted to Madison County Planning and Development Commission on _____

Recommendation of Madison County Planning and Development Commission on Petition _____

Public Hearing date as established by the Madison County Board of Supervisors _____

Final disposition of Petition _____



*State of Mississippi
Department of Environmental Quality
Office of Pollution Control*

Certificate of Permit Coverage

under Mississippi's Mining Storm Water General NPDES Permit

Be it known

**Goodloe Construction Company, LLC
Canton, Mississippi**

having submitted an acceptable Mining Notice of Intent, is hereby granted this Certificate of Permit Coverage in order to in association with the operation of

**Goodloe Mine #2
Receiving Stream: Tilda Bogue
Madison County**

Coverage No: MSR322896

Date of Coverage: **November 30, 2020**

Date General Permit Expires: March 31, 2023

Krystal Rudolph
Chief, Environmental Permits Division

78307 GNP20200001



Franklin Environmental Group

October 13, 2020

Chief, Environmental Permits Division
Mississippi Department of Environmental Quality
Post Office Box 2261
Jackson, Mississippi 39225

REFERENCE: GOODLOE MINE #2 SWPPP AND EXEMPTION

To Whom It May Concern:

On behalf of Goodloe Construction Company, LLC, please accept the enclosed SWPPP and exemption for the Goodloe Mine #2. Please email me at the franklinenvironmental@outlook.com when you receive this permit package.

Should you have questions or require additional information concerning this project, please contact me at 601.672.2055.

Sincerely,

FRANKLIN ENVIRONMENTAL GROUP, INC.

Derick F. Milner, CPESC, CPMSM
President

***GOODLOE MINE #2 MINE STORM WATER
POLLUTION PREVENTION PLAN
(SWPPP)***



Franklin Environmental Group

**GOODLOE CONSTRUCTION COMPANY, LLC
GOODLOE MINE #2 MINE
STUMPBRIDGE ROAD**

CANTON, MADISON COUNTY, MISSISSIPPI

**UNDER MISSISSIPPI'S
MINING STORM WATER GENERAL NPDES PERMIT**

COVERAGE NO. MSR 32_____

SWPPP MANAGER: Mr. Delbert Goodloe

TITLE: Operations Manager

TELEPHONE #: 601-750-8482

SWPPP COMMITTEE MEMBER:

Delbert Goodloe – Goodloe Construction Company, LLC

TABLE OF CONTENTS

1.0	INTRODUCTION.....	1
2.0	SITE LOCATION AND DESCRIPTION	1
3.0	POLLUTION PREVENTION TEAM.....	1
4.0	POTENTIAL SOURCES OF STORM WATER POLLUTANTS.....	1
4.1	Narrative Description of Activities and Significant Materials	1
4.2	Significant Spills or Leaks.....	2
5.0	NON-STORM WATER DISCHARGE CERTIFICATION.....	2
6.0	STORM WATER MANAGEMENT CONTROLS	2
6.1	Sediment and Erosion Control.....	3
6.1.1	Implementation Sequence	3
6.2	Preventative Maintenance	3
6.3	Good Housekeeping.....	3
6.3.1	Operation and Maintenance	4
6.3.2	Material Storage Practices	4
6.3.3	Material Inventory Procedures	4
6.4	Spill Plans and Response Procedures	5
6.5	Employee Training	5
6.6	Visual Site Inspections.....	6
7.0	NON-NUMERICAL LIMITATIONS, INSPECTIONS, RECORD KEEPING AND REPORTING	6
7.1	Storm Water Discharge Limitations.....	6
7.2	Record Keeping.....	6
7.3	Reporting	6
7.4	Annual SWPPP Update.....	7
8.0	CERTIFICATION OF SWPPP.....	7

FIGURES	Figure 1	Site Location
	Figure 2	Mine Boundary
	Figure 3	Site Plan

APPENDICES	Appendix A	List of Significant Spills or Leaks
	Appendix B	Monthly Inspection Form
	Appendix C	Non-Storm Water Discharge Evaluation and Certification
	Appendix D	Employee Training
	Appendix E	Notice of Termination Form

1.0 INTRODUCTION

The Clean Water Act (CWA), as amended (33 U.S.C. 1251 et.seq.) and the rules and regulations promulgated under the authority of this Act require a permit for storm water discharges associated with certain industrial activities. Regulatory applicability is determined by the specific description of the covered industry, or activity, or by the Standard Industrial Classification (SIC) code, which is 1442, Construction Sand and Gravel, for this activity. The Mississippi Department of Environmental Quality (MDEQ) Notice of Exemptions allows discharges of storm water within the State of Mississippi for operations affecting four (4) acres or less and greater than 1,320 feet from another mine. Franklin Environmental Group, Inc. was retained by Goodloe Construction Company, LLC (Goodloe Construction) of Canton, Mississippi, to prepare this Storm Water Pollution Prevention Plan (SWPPP) for an approximate 4.0-acre site referred to as the Goodloe Mine #2 Mine. The purpose of the SWPPP is to identify potential contaminants to storm water, describe best management practices (BMPs) and control measures. This SWPPP was prepared in accordance with the MDEQ *Mississippi SWPPP Guidance Manual for Industrial Facilities* and the *SWPPP Guidance Manual for Construction Activities*. The SWPPP must identify potential pollutant sources, describe, and ensure implementation of pollutant reduction practices, assure compliance with permit conditions, and incorporate appropriate spill/leak responses and structural and non-structural best management practices (BMPs).

2.0 SITE LOCATION AND DESCRIPTION

The Goodloe Mine #2 Mine is located north of Stumpbridge Road, Canton, Madison County, Mississippi, latitude 32° 40' 37.84" North, longitude 89° 00' 2.25" West, being situated in the southwest quarter of the southwest quarter of southeast Section 28, Township 10 North, Range 3 East, Madison County. The site encompasses approximately 4.0-acres and will be mined for soil to a depth of approximately 15-20 feet below surface grade. The footprint of the mine is in the drainage basin of Tilda Bogue, which has no known established TMDLs for sediment and pathogens. Topographic maps showing a site plan and proposed drainage patterns are attached as Figures 1-3.

3.0 POLLUTION PREVENTION TEAM

The Pollution Prevention Team (PPT) is responsible for oversight, implementation, maintenance, and any necessary revisions to the SWPPP. Members of the Goodloe Mine #2 Mine PPT are:

- Mr. Delbert Goodloe, Project Manager..... (601) 750-8482

Specifically, team responsibilities include identifying pollutant sources and risk, choosing BMPs, and assessing the SWPPP effectiveness. The PPT leader (PPTL) will keep up to date on all site operations and ensure that changes are made to the SWPPP, as needed.

4.0 POTENTIAL SOURCES OF STORM WATER POLLUTANTS

4.1 Narrative Description of Activities and Significant Materials

Potential sources of storm water pollution during operation of the proposed surface mine are as follows:

- Vehicle and equipment maintenance;
- Diesel storage in aboveground storage tank;
- Equipment fueling; and
- Exposed soil.

Incidental contaminants from heavy equipment and trucks, such as oil, grease, and fuel, may be present due to minor leaks, spills, or other causes. The maximum flow anticipated from this type of exposure is expected to be insignificant.

4.2 Significant Spills or Leaks

Significant spills or leaks are defined by federal regulations as a release within a 24-hour period of a hazardous substance or oil in an amount equal to, or in excess of, a reportable quantity listed in 40 CFR Part 117 and 40 CFR Part 302.

Significant spills or leaks that could occur in the future will be reported to the proper authorities in accordance with applicable regulations and requirements. In such an event, documentation shall include the following information, as appropriate:

- Date of spill;
- Weather conditions;
- Duration of spill;
- Cause of spill;
- Environmental problems created by spill;
- Response procedures;
- Parties notified;
- Recommended revisions to the SWPPP and operating procedures; and
- Equipment needed to prevent recurrence.

5.0 NON-STORM WATER DISCHARGE CERTIFICATION

Federal law and the General Permit virtually prohibit all non-storm water discharges unless specifically permitted under an NPDES Permit. Potential non-storm water discharges will be monitored during monthly site inspections, as well as the annual evaluation.

6.0 STORM WATER MANAGEMENT CONTROLS

General facility BMPs such as identifying a pollution prevention committee, sediment and erosion control, preventive maintenance, good housekeeping, spill prevention and response procedures, employee training, preventing non-storm water discharges, and routine site inspections were developed. The pollution potential, existing BMPs, and BMPs to be

implemented for the identified exposed significant materials were assessed and will be developed based on risk identification, assessment, and material inventory of potential sources at the site. Descriptions of the BMPs are provided in the following sections. The facility drains to the Big Black River that is a TMDL waterbody for sedimentation. Selected BMPs will be installed to prevent sediment from exiting the facility.

6.1 Sediment and Erosion Control

Berms will be located around the east, west, and south side of the site. These berms will be used as erosion control on disturbed areas to prevent sediment from reaching any intermittent receiving stream, lake, or storm water drainage ditch. Silt fencing will be located around the east, west, and south side of the site. Erosion controls will be installed prior to soil disturbance. Seeding, where practical, will also be used to stabilize soils in areas that will not be disturbed for more 30 days or more, the appropriate temporary or permanent vegetative practices shall be implemented within seven (7) calendar days. The seeding chart contained in the MDEQ *Mississippi SWPPP Guidance Manual for Construction Activities* will be used as guidance. A gravel road construction entrance will be utilized to minimize sediment tracking onto public roads.

6.1.1 Implementation Sequence

Install construction entrance, silt fencing, and/or other MDEQ approved BMPs. 2/ Perform any remaining clearing and grubbing operations as needed. 3/ Mine areas as needed to reduce areas that will be left undisturbed for 30 more days (see 6.1). 4/ Grade areas for seeding and reclamation. 5/ Conduct final stabilization and reclamation. 5/Remove all temporary measures.

6.2 Preventive Maintenance

The preventive maintenance program at the Goodloe Mine #2 Mine will involve the inspection and maintenance of storm water management devices and the inspection of potential pollutant sources to preclude breakdowns, or failures, which could result in discharges of polluted storm water. Maintenance of storm water management devices, performed as part of this program, and other routine maintenance programs include the following:

- Cleaning accumulated sediment from conveyance systems;
- Clearing of debris from drainage culverts; and
- Checking containment structures.

6.3 Good Housekeeping

Good housekeeping practices will be implemented and are intended to keep the facility clean and orderly, thus minimizing the potential for contribution to storm water run-off. The eight housekeeping practices detailed in the MSR32 permit will be adopted by the owner. Good housekeeping involves the following categories:

- Regularly pick up and dispose of garbage, debris or waste material found in, and around, the facility;
- Drip pans or buckets will be placed beneath hose connections during loading/unloading operations of motor fuels, as applicable;
- All equipment will be inspected once every month to ensure proper working conditions; and

- Inspections for leaks that could lead to discharges of chemicals, or for conditions where storm water contacts

6.3.1 Operation and Maintenance

The following general practices will be implemented into the Goodloe Mine #2 Mine good housekeeping program and will remain in place for the duration of mining activities:

- Regularly pick up and dispose of garbage, debris or waste material found in, and around, the facility;
- Drip pans or buckets will be placed beneath hose connections during loading/unloading operations of motor fuels, as applicable;
- All equipment will be inspected once every month to ensure proper working conditions; and
- Inspections for leaks that could lead to discharges of chemicals, or for conditions where storm water contacts raw materials, waste materials or products will be performed monthly.

6.3.2 Material Storage Practices

Drums will not typically be used at the facility. Should drums be stored, the following proper storage techniques will be followed:

- Storage containers, and drums will be moved away from direct traffic routes to prevent spills;
- Containers will be stored on pallets, or similar devices, to prevent corrosion of the containers which can result when in contact with moisture on the ground; and
- The responsibility of hazardous material inventory will be assigned to a limited number of personnel who are trained to handle hazardous materials.

6.3.3 Material Inventory Procedures

The following inventory procedures will be followed:

- All chemical substances present in the workplace will be identified. All purchase orders for chemical substances will be reviewed. All chemical substances used in the workplace will be listed and Material Safety Data Sheets (MSDS) will be retained on file for each chemical;
- All containers will be labeled to show the name, type of substance, stock number, expiration date, health hazards, suggestions for handling, and first aid information; and
- All hazardous waste materials and recyclable materials which require special handling, storage, use, and special consideration will be clearly marked on the container.

6.4 Spill Plans and Response Procedures

Petroleum storage is offsite. Based on a diesel fuel storage, a SPCC Plan is not required for this facility. However, a berm will be placed around the AST and a spill response kit consisting of granular oil absorbent material and oil absorbent pads and booms will be kept in service vehicles at all times in order to mitigate minor spills.

Procedures for cleaning up spills, or releases, of potential pollutants are as follows:

- Personnel involved in the clean-up will take precautions to protect personal health and safety, as outlined in the MSDS for the spilled or released substance;
- All spills and releases of potential pollutants which could potentially contaminate storm water are to be completely contained upon discovery;
- The source material of the spill will be identified and halted immediately;
- The spilled material will be cleaned up immediately;
- The spilled or released material, all disposable equipment, and contaminated equipment will be disposed of in appropriate containers; and
- Non-disposable equipment shall be decontaminated or disposed of, in accordance with 40 CFR Parts 260-265.

In the event of a hazardous material release, an employee will contact the PPTL. In the event of a small localized spill, an employee will immediately pour non-combustible sorbent material on the affected area. Arrangements will be made for proper disposal according to 40 CFR Parts 260-265.

The PPTL and PPT will be notified of any spills or releases. Spills, or releases, which are not fully contained, will be reported to the appropriate agency or agencies which are listed in Appendix B. Records of spills or releases will be documented in Appendix A.

6.5 Employee Training

Effective management of storm water pollution requires that all facility staff be familiar with those conditions that may cause pollution. Furthermore, day-to-day proper use of BMPs by all employees is essential for the success of the SWPPP. Mr. Delbert Goodloe, the designated PPTL, will be responsible for implementation of the guidelines established in the SWPPP.

The PPTL is responsible for employee training at the Goodloe Mine #2 Mine. Training objectives will consist of: (1) spill prevention and response, (2) good housekeeping practices, (3) material management practices, and (4) other general BMPs. Training will be conducted on an annual basis, and the information will be reviewed with new employees during their employee orientation. Regular feedback regarding the implementation and maintenance of the storm water management practices should be obtained from operations staff by the PPTL. In addition, the PPTL will annually evaluate the effectiveness of the training program and make improvements to promote employee awareness (see Appendix D).

6.6 Visual Site Inspections

Goodloe will continue to perform inspections of all erosion controls and other SWPPP requirements during permit coverage for the Goodloe Mine #2 Mine. The inspections will be performed at least monthly and after 2-year, 24-hour storm event (approximately 4-inches on the MS/TN State Line); and as often as is necessary to ensure that appropriate erosion and sediment controls have been properly constructed and maintained. The inspections will determine if additional or alternative control measures are required. Inspections will be recorded on the MDEQ “Annual Storm Water Site Inspection Report Form” as presented in Appendix B. Non-functioning erosion controls will be repaired, replaced, or supplemented with functional controls within 24 hours of discovery, or as soon as field conditions allow.

7.0 NON-NUMERICAL LIMITATIONS, INSPECTIONS, RECORD KEEPING AND REPORTING

7.1 Storm Water Discharge Limitations

Storm water will be free from:

- Debris, oil scum, and other floating materials other than in trace amounts;
- Eroded soils and other materials that will settle to form objectionable deposits in receiving streams;
- Suspended solids, turbidity, and color at levels inconsistent with receiving streams; and
- Chemicals in concentrations that would cause violation of State water quality criteria in receiving streams.

7.2 Record Keeping

Records obtained during (1) monthly visual inspections and (2) the semi-annual site evaluation will be retained onsite for a minimum of three years after the date of the inspection. The PPTL will be responsible for implementing record keeping procedures.

7.3 Reporting

Inspection reports for SWPPP Evaluation will be will keep onsite or locally available.

In the event of anticipated, or unanticipated, noncompliance with the Storm Water General Permit requirements, the following procedures will be followed:

- Anticipated Noncompliance – The owner or operator will give at least ten days advance notice, if possible, before any planned noncompliance with the permit; and
- Unanticipated Noncompliance – The owner or operator will notify the MDEQ orally within 24 hours from the time that he, or she, becomes aware of unanticipated noncompliance. A written notice will be provided to the MDEQ within five working days of the time that he, or she, becomes aware of the circumstances. The written report must describe the cause, exact dates and times, steps taken or planned to reduce, eliminate, or prevent reoccurrence of the noncompliance and if the noncompliance has not ceased, the anticipated time for correction.

7.4 Annual SWPPP Update

Based upon the findings of the annual site evaluation, Goodloe will amend the SWPPP and SWPPP practices whenever there is change in design, construction, operation, or maintenance, which may potentially increase controlling storm water pollutants. Goodloe will submit the amended SWPPP to the MDEQ within 30 days following any amendments.

8.0 CERTIFICATION OF SWPPP

I certify under penalty of the law that this document and all attachments were prepared under my direction or supervision in accordance with a system designed to ensure that qualified personnel properly gather and evaluate the information submitted. Based on my inquiry of the person, or persons, who manages the system, or those persons directly responsible for gathering the information, the information submitted is, to the best of my knowledge and belief, true, accurate, and complete. I am aware that there are significant penalties for submitting false information, including the possibility of fine and imprisonment for knowing violations.



President, FEG

October 10, 2020

Date

Certified Professional in Erosion and
Sediment Control - #6618
Certified Professional in Municipal
Storm Water Management - #0196



Franklin Environmental Group



MISSISSIPPI DEPARTMENT OF ENVIRONMENTAL QUALITY

**MINING NOTICE OF INTENT (MNOI)
FOR COVERAGE UNDER
MINING STORM WATER, DEWATERING AND NO DISCHARGE
GENERAL PERMIT MSR32 _____
(Number to be assigned by State)**

File at least 30 days prior to the commencement of mining; 15 days if a Storm Water Pollution Prevention Plan (SWPPP) is already on file and mine dewatering is not proposed. Lateral expansion of an existing mine that has general permit coverage requires the submittal of the Major Modification Form, not a new MNOI. However, modification of the existing SWPPP to include the expansion is required. Discharge of storm water or impounded water associated with mining or the operation of a wastewater recirculation system with no discharge without written notification of coverage from MDEQ is a violation of State Law.

If the company seeking coverage is a corporation, a limited liability company, a partnership, or a business trust, attach proof of its registration with the Mississippi Secretary of State and/or its Certificate of Good Standing. This registration or Certificate of Good Standing must be dated within twelve (12) months of the date of the submittal of this coverage form. Coverage will be issued in the company name as it is registered with the Mississippi Secretary of State.

Please indicate the activities to be covered by this MNOI (check all that apply).

- Storm Water Discharges Associated with Mining Mine Dewatering
 Wastewater Recirculation System with No Discharge

The appropriate section of the MNOI must be completed if the applicant proposes to discharge storm water, discharge impounded mine water (dewatering) and/or operate a wastewater recirculation system with no discharge.

A site-specific Storm Water Pollution Prevention Plan (SWPPP) developed in accordance with ACT5 of the General Permit and a United States Geological Survey (USGS) quadrangle map or photocopy, indicating the site location and outfalls must be included with the MNOI submittal. The name of the quadrangle map must be shown on all copies. Quadrangle maps can be obtained from the MDEQ, Office of Geology at 601-961-5523. Additional submittals may include the following (check all that apply).

- Section 404 Documentation Notice of Exempt Operations Form
 Dam/Reservoir Safety Permit or Written Authorization

ALL INFORMATION MUST BE COMPLETED (indicate "N/A" where not applicable)

MSR32 _____

(NUMBER TO BE ASSIGNED BY STATE)

APPLICANT IS THE: OWNER OPERATOR

OWNER CONTACT INFORMATION

OWNER CONTACT PERSON: Jimmie Mae Goodloe
OWNER COMPANY LEGAL NAME: N/A
OWNER STREET OR P. O. BOX: 658 Goodloe Road
OWNER CITY: Canton STATE: Mississippi ZIP: 39046
OWNER PHONE #: (601) 859-1106 OWNER EMAIL: N/A

OPERATOR CONTACT INFORMATION

OPERATOR CONTACT PERSON: Mr. Delbert Goodloe
OPERATOR COMPANY LEGAL NAME: Goodloe Construction Company, LLC
OPERATOR STREET OR P. O. BOX: 436 Stumpbridge Road
OPERATOR CITY: Canton STATE: MS ZIP: 39046
OPERATOR PHONE #: (601) 750-8482 OPERATOR EMAIL: GoodloeLLC@aol.com

MINE INFORMATION

MINE NAME: Goodloe Mine #2
MINE SITE ADDRESS (If the physical address is not available, please indicate nearest named road.)
Street: Stump Bridge Road
City: Canton State: Mississippi County: Madison Zip: 39046
SW /4 OF SW /4 OF SECTION 28 , TOWNSHIP 10N , RANGE 3E
MINE SITE TRIBAL LAND ID (N/A If not applicable): N/A
ATTACH A USGS QUAD MAP, EXTENDING ½ MILE BEYOND FACILITY, OUTLINING THE MINE BOUNDARIES
(Maps can be obtained from the Mississippi Office of Geology. For information call 601-961-5523).
LATITUDE: 32 degrees 40 minutes 37.84 seconds LONGITUDE: 89 degrees 00 minutes 02.25 seconds
LAT & LONG DATA SOURCE (GPS (Please GPS Entrance Gate) or Map Interpolation): Google Earth
TOTAL ACREAGE: 4.0 MATERIAL TO BE MINED: Borrow
WILL HYDRAULIC DREDGING BE USED? YES NO
WASHING OF SAND/GRAVEL? YES NO

ESTIMATED START DATE: 11/01/20
YYYY-MM-DD
SIC CODE 1442

ESTIMATED END DATE: 11/01/23
YYYY-MM-DD
NAICS CODE 212321

RECEIVING STREAM INFORMATION

NEAREST NAMED RECEIVING STREAM: Unnamed tributary of Tilda Bogue

IS RECEIVING STREAM ON MISSISSIPPI'S 303(D) LIST OF IMPAIRED WATER BODIES? (The 303(d) list of impaired waters and TMDL stream segments may be found of MDEQ's website: http://www.deq.state.ms.us/MDEQ.nsf/page/TWB_Total_Maximum_Daily_Load_Section) YES NO

HAS A TMDL BEEN ESTABLISHED FOR THE RECEIVING STREAM SEGMENT? YES NO

COMPLETE IF STORM WATER DISCHARGE IS PROPOSED

ATTACH A STORM WATER POLLUTION PREVENTION PLAN (SEE PERMIT FOR REQUIREMENTS)

IDENTIFY THE ASSOCIATION OR GENERIC SWPPP ON FILE AT MDEQ: See attachment.

COMPLETE IF WASTEWATER RECIRCULATION SYSTEM WITH NO DISCHARGE IS PROPOSED

DISTANCE BETWEEN RECIRCULATION POND(S) AND PROPERTY LINE: _____ (FT)
(MUST BE AT LEAST 150 FEET)

NUMBER OF RECIRCULATION POND(S): _____

STORAGE CAPACITY OF EACH RECIRCULATION POND(S): _____ (FT³)

COMPLETE IF MINE DEWATERING IS PROPOSED

ESTIMATED DEWATERING VOLUME: _____ (GAL/DAY)

NAME AND ADDRESS OF THE RECIPIENT OF THE DISCHARGE MONITORING REPORTS (DMRs), IF DIFFERENT FROM SIGNATORY: _____

DOCUMENTATION OF COMPLIANCE WITH OTHER REGULATIONS/REQUIREMENTS

Coverage under this general permit will not be granted until all other required MDEQ permits and approvals are addressed.

WILL THE CONSTRUCTION OR OPERATION OF THIS MINE INVOLVE THE RE-ROUTING, FILLING OR CROSSING OF A WATER CONVEYANCE OF ANY KIND? YES NO

If yes, contact the U.S. Army Corps of Engineers' Regulatory Branch for permitting requirements. If the mine requires a Corps of Engineers Section 404 permit, provide appropriate documentation with this MNOI that:

- The mine has been approved by individual permit, or
- The work will be covered by a nationwide permit and NO NOTIFICATION to the Corps is required, or
- The work will be covered by a nationwide or general permit and NOTIFICATION to the Corps is required.

LIST ANY NPDES PERMIT NO(s). _____ GEOLOGY APPLICATION/PERMIT NO. _____

LIST OTHER GEOLOGY PERMIT NUMBERS THAT APPLY TO COVERAGE AREA _____

IS THE MINE LESS THAN 4 ACRES AND GREATER THAN 1320 FEET FROM ANOTHER MINE?

- YES A "Notice of Exempt Operations" Form must be included with the MNOI or proof of prior submission, if previously submitted to the Office of Geology.
- NO A "Notice of Intent to Mine Class I or Class II Materials" Form must be filed before coverage will be granted under the Mining General Permit. For information on Office of Geology requirements, call 601-961-5515.

LIST ANY LOCAL STORM WATER ORDINANCES WITH WHICH THE OPERATIONS MUST COMPLY AND SUBMIT ANY ASSOCIATED APPROVAL DOCUMENTATION. _____

IF IMPOUNDMENTS WILL BE CONSTRUCTED ABOVE NATURAL SURFACE ELEVATIONS, INDICATE WHICH, IF ANY, OF THE FOLLOWING APPLY.

- The impoundment will be constructed with a peripheral dam or levee 8 feet or greater in height, measured from the lowest elevation of its toe.
- The impoundment will have a maximum storage volume greater than 25 acre-feet.
- The impoundment will impound a watercourse with a continuous flow.
- The impoundment has the potential to threaten downstream lives or man-made structures.

If any of the impoundments meet any of the above criteria, the applicant will be required to obtain written authorization from MDEQ, Dam Safety Division before coverage will be granted under the Mining General Permit.

I certify under penalty of law that this document and all attachments were prepared under my direction or supervision in accordance with a system designed to assure that qualified personnel properly gathered and evaluated the information submitted. Based on my inquiry of the person or persons who manage the system, or those persons directly responsible for gathering the information, the information submitted is, to the best of my knowledge and belief, true, accurate and complete. I am aware that there are significant penalties for submitting false information, including the possibility of fine and imprisonment for knowing violations.

_____	10/13/2020
Authorized Signature¹	Date
Mr. Delbert Goodloe	President
_____	_____
Printed Name	Title

¹This application shall be signed according to the General Permit, Act 15, T-4 as follows:

- For a corporation, by a responsible corporate officer.
- For a partnership, by a general partner.
- For a sole proprietorship, by the proprietor.
- For a municipal, state or other public facility, by either a principal executive officer, the mayor, or ranking elected official.
- Duly Authorized Representative

Please submit this form to: Chief, Environmental Permits Division
MDEQ, Office of Pollution Control
P.O. Box 2261
Jackson, Mississippi 39225

MISSISSIPPI DEPARTMENT OF ENVIRONMENTAL QUALITY
OFFICE OF GEOLOGY
Mining and Reclamation Division
P. O. Box 2279
Jackson, Mississippi 39225-2279
(601) 961-5515

NOTICE OF EXEMPT OPERATION

This form shall be filed with the Office of Geology, Mining and Reclamation Division **only** for operations affecting **4** acres or less *and greater* than **1320** feet from another mine. **NOTE:** Local, county, federal or other state agencies may also require permits before mining can be done on your site. This is *your* responsibility.

Name of applicant/operator: Goodloe Construction Company, LLC
Mailing address: 436 Stumpbridge Road
Canton, Mississippi 39046
Telephone number: _____

Do you have any **other** exempt mining operations on file? [] yes [x] no None active
Do you plan to file for a **permit** and expand this site later? [] yes [x] no Not the intent at the time of this submission, per Mr. Goodloe - 10/13/2020

LOCATION

SW 1/4 of SW 1/4 of Section 28, Township 10N Range 3E County Madison

Include a map or aerial photo marked with site location with this form.

Name of land owner: Jimmie Mae Goodloe
Mailing address: 658 Goodloe Road
Canton, Mississippi 39046
Telephone number 601.859.1106

Date operation to begin 11/01/2020 Date operation to end (estimated) 11/01/23
Material to be mined Borrow Number of acres to be mined 4.0 (A)*
Total acres to be affected by operation (mine, roads, storage, etc.) 4.0 (B)*
Is operation **closer** than 1,320 feet (1/4 mile) to another mine? [x] no [] yes*

***If items A or B exceed 4 acres or you answered YES above, you need to apply for a MINING PERMIT.**

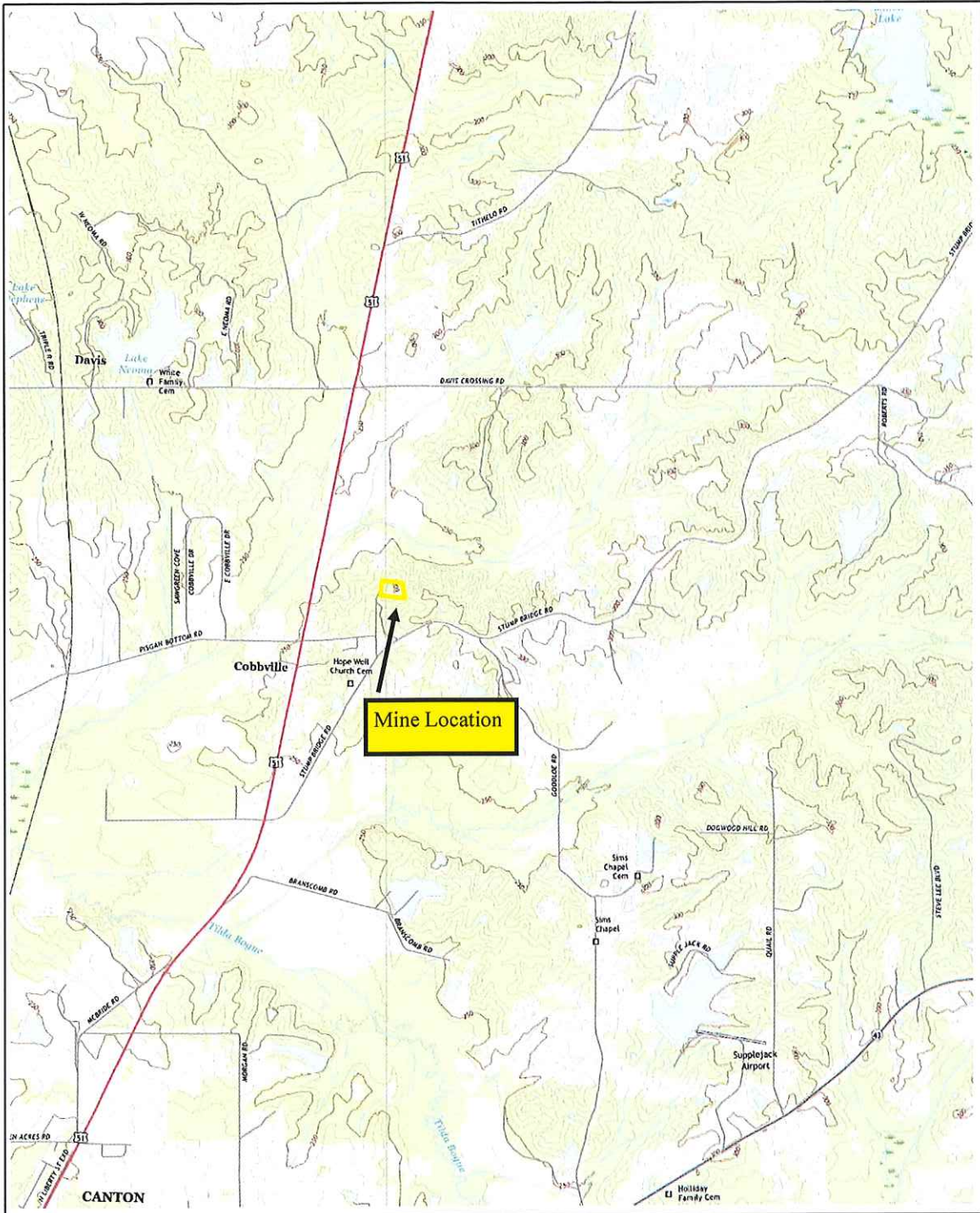
Applicant/operator: Mr. Delbert Goodloe By _____
Signature

Date: 10/13/2020 Position President, Goodloe Contruction Company, LLC

For Office of Geology use only

Date: _____ By _____
Division Director
Mining and Reclamation Division

FIGURES



2018 USGS, SHOCOE, MS
 2018 USGS SHARON, MS
 2018 USGS CANTON, MS



Franklin Environmental Group

Figure 1
 Goodloe Mine #2 Location

Created By:

DFM

10/13/20

SCALE

Checked By:

DFM

10/13/20

1" = 1,500'





**Goodloe Mine #2
Canton, Madison County, MS**



Franklin Environmental Group

**Figure 2
Site Plan**

Created By:

DFM

10/13/20

SCALE

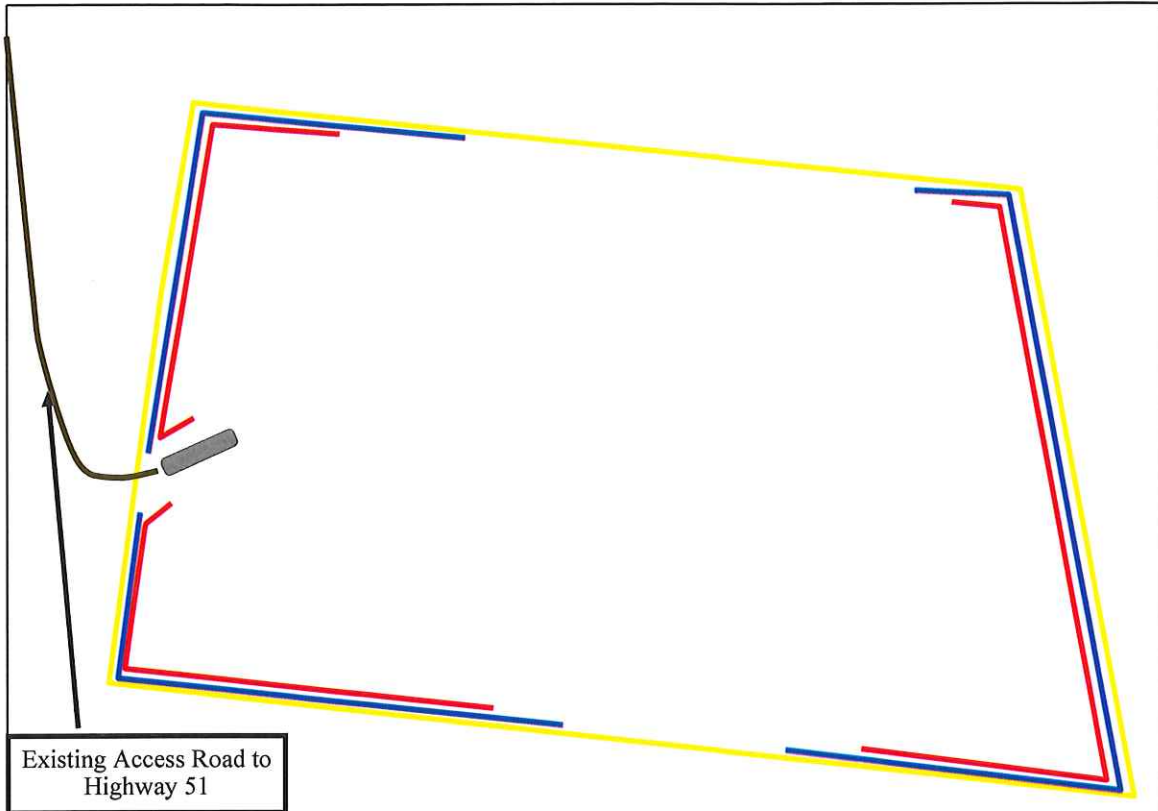
Checked By:

DFM





10/13/20

1" = 100'





Existing Access Road to Highway 51

Mine Boundaries	
Construction Entrance	
Berm	
Silt Fencing	

<p>Goodloe Mine #2 Canton, Madison County, MS</p>	 Franklin Environmental Group			<p>Figure 3 Erosion Control Plan</p>	
	Created By:	DFM	10/13/20	SCALE	
Checked By:	DFM	10/13/20	1" = 100'		

APPENDIX A

LIST OF SIGNIFICANT SPILLS AND LEAKS

APPENDIX B
MONTHLY INSPECTION
FORM

**COVERAGE NUMBER (MSR32 _____) INSPECTION YEAR _____
 SITE INSPECTION REPORT AND CERTIFICATION FORM
 MINING GENERAL PERMIT**



Results of the inspection by ACT7 of this permit shall be recorded on this report form and in addition, copies of all completed forms shall be retained onsite or locally available. Inspections must be performed monthly and after a 2-year, 24-hour storm event (approx. 6-inches on Gulf Coast to 4-inches at MS/TN State Line). The coverage number must be listed at the top of all Site Inspection Report and Certification Forms.

COVERAGE RECIPIENT INFORMATION

COMPANY NAME: _____ MINE NAME: _____
 MINE LOCATION: _____ GEOLOGY APPLICATION/PERMIT NO. _____
 NEAREST PROJECT CITY: _____ COUNTY: _____
 MAILING ADDRESS: _____
 MAILING CITY: _____ STATE: _____ ZIP: _____
 CONTACT PERSON: _____ CONTACT PHONE NUMBER: _____

INSPECTION DOCUMENTATION

DATE (mm/dd/yy)	TIME (hh:mm AM/PM)	AFTER 2-YEAR, 24-HOUR STORM EVENT? (CHECK IF YES)	ANY DEFICIENCIES? (CHECK IF YES)	INSPECTOR(S)
		<input type="checkbox"/>	<input type="checkbox"/>	
		<input type="checkbox"/>	<input type="checkbox"/>	
		<input type="checkbox"/>	<input type="checkbox"/>	
		<input type="checkbox"/>	<input type="checkbox"/>	
		<input type="checkbox"/>	<input type="checkbox"/>	
		<input type="checkbox"/>	<input type="checkbox"/>	
		<input type="checkbox"/>	<input type="checkbox"/>	
		<input type="checkbox"/>	<input type="checkbox"/>	
		<input type="checkbox"/>	<input type="checkbox"/>	
		<input type="checkbox"/>	<input type="checkbox"/>	
		<input type="checkbox"/>	<input type="checkbox"/>	
		<input type="checkbox"/>	<input type="checkbox"/>	
		<input type="checkbox"/>	<input type="checkbox"/>	
		<input type="checkbox"/>	<input type="checkbox"/>	
		<input type="checkbox"/>	<input type="checkbox"/>	
		<input type="checkbox"/>	<input type="checkbox"/>	
		<input type="checkbox"/>	<input type="checkbox"/>	
		<input type="checkbox"/>	<input type="checkbox"/>	
		<input type="checkbox"/>	<input type="checkbox"/>	
		<input type="checkbox"/>	<input type="checkbox"/>	
		<input type="checkbox"/>	<input type="checkbox"/>	

Deficiencies Noted During any Inspection (give date(s); attach additional sheets if necessary): _____

Corrective Action Taken or Planned (give date(s); attach additional sheets if necessary): _____

Based upon this inspection which I or personnel under my direct supervision conducted, I certify that all erosion and sediment controls have been implemented and maintained, except for those deficiencies noted above, in accordance with the Storm Water Pollution Prevention Plan filed with the Office of Pollution Control and sound engineering practices as required by the above referenced permit. I further certify that the MNOI and SWPPP information on file with MDEQ is up to date.

I certify under penalty of law that this document and all attachments were prepared under my direction or supervision in accordance with a system designed to assure that qualified personnel properly gather and evaluate the information submitted. Based on my inquiry of the person or persons responsible for gathering the information, the information submitted is, to the best of my knowledge and belief, true, accurate and complete. I am aware that there are significant penalties for submitting false information, including the possibility of fines and imprisonment for knowing violations.

 Authorized Signature

 Date

 Printed Name

 Title

APPENDIX C

**NON-STORM WATER
DISCHARGE EVALUATION AND CERTIFICATION**

APPENDIX C
NON-STORM WATER DISCHARGE EVALUATION AND CERTIFICATION

Outfall No.	Date of Evaluation	Method Used to Evaluate Discharge	If Evaluation is Not Possible, Give Reason	Is Non Storm Water Being Discharged? (Y/N)	List Likely Sources of Non Storm Water Discharge	Person(s) who Conducted the Test or Evaluation
		Visual Inspection			Diesel AST	
		Visual Inspection			Exposed Soil	
		Visual Inspection			Exposed Concrete	
		Visual Inspection			Exposed Asphalt	
CERTIFICATION						
I certify under the penalty of law that is, to the best of my knowledge and belief, true, accurate, and complete						
A. Name and Official Title (type or print)						
. Area Code and Telephone No.						
. Signature						
D. Date Signed						

APPENDIX D
EMPLOYEE TRAINING

APPENDIX D
EMPLOYEE TRAINING

Instructions Describe the employee training program for your facility below. The program should at a minimum, address spill prevention and response, good housekeeping, and material management practices. Provide a schedule for the training program and list the employees who attend training sessions.			
Training Topics	Brief Description of Scheduled Training Program/Materials (element)	Proposed Frequency of Training	Who Will Attend?
Spill Prevention and Response	Staff Meetings	Annual	All full time employees
Good Housekeeping	Staff Meetings	Annual	All full time employees
Material Management Practices	Staff Meetings	Annual	All full time employees
Other Topics	Staff Meetings	Annual	All full time employees

APPENDIX E
NOTICE OF
TERMINATION FORM

Request for Termination (RFT) of Coverage



Mining General NPDES Permit No. MSR32 _____ County _____
 (Fill in your Certificate of Coverage Number and County)

Use this form to request coverage termination only after mining activities have permanently stopped and permanent erosion and sediment controls are successfully established. Inspections must continue until the coverage recipient receives written notice of coverage termination by MDEQ.

Please check which of the following apply:

- Non-Exempt Mining Operation (copy of Permit Board Order, authorizing 90% or final release of mining performance bond attached)
- Exempt Mining Operation (as defined in MDEQ's Mississippi Surface Mining and Reclamation Rules and Regulations)

(Please Print or Type)

Facility Name: _____ Closure Date: _____

Physical Site Street Address (if not available, indicate nearest named road): _____

City: _____ County: _____

Landowner Company Name: _____

Landowner Company Contact Name and Position: _____

Street Address / P.O. Box: _____

City: _____ State: _____ Zip: _____

Tel. # (_____) _____

Operator Company Name (if different than owner): _____

Operator Contact Name and Position: _____

Street/ Address / P.O. Box: _____

City: _____ State: _____ Zip: _____

Tel. # (_____) _____

I certify under penalty of law that this document and all attachments were prepared under my direction or supervision in accordance with a system designed to assure that qualified personnel properly gathered and evaluated the information submitted. Based on my inquiry of the person or persons who manage the system, or those persons directly responsible for gathering the information, the information submitted is, to the best of my knowledge and belief, true, accurate and complete. I am aware that there are significant penalties for submitting false information, including the possibility of fines and imprisonment for knowing violations. I understand that by submitting this Request for Termination and receiving written confirmation, I will no longer be authorized to discharge storm water associated with industrial activity under this general permit. Discharging pollutants in storm water associated with industrial activity to waters of the United States is unlawful under the Clean Water Act where the discharge is not authorized by a NPDES permit. I also understand that the submittal of this Request for Termination does not release an owner or operator from liability for any violations of this permit or the Clean Water Act.

 Authorized Name (Print) Telephone Signature Date Signed

- ¹This application shall be signed according to the General Permit, ACT 15, T-4 as follows:
- For a corporation, by a responsible corporate officer.
 - For a partnership, by a general partner.
 - For a sole proprietorship, by the proprietor.
 - For a municipal, state or other public facility, by principal executive officer, mayor, or ranking elected official.

After signing please mail to: Environmental Permits Division, Office of Pollution Control
 P.O. Box 2261
 Jackson, MS 39225

Revision: 2/16/2018